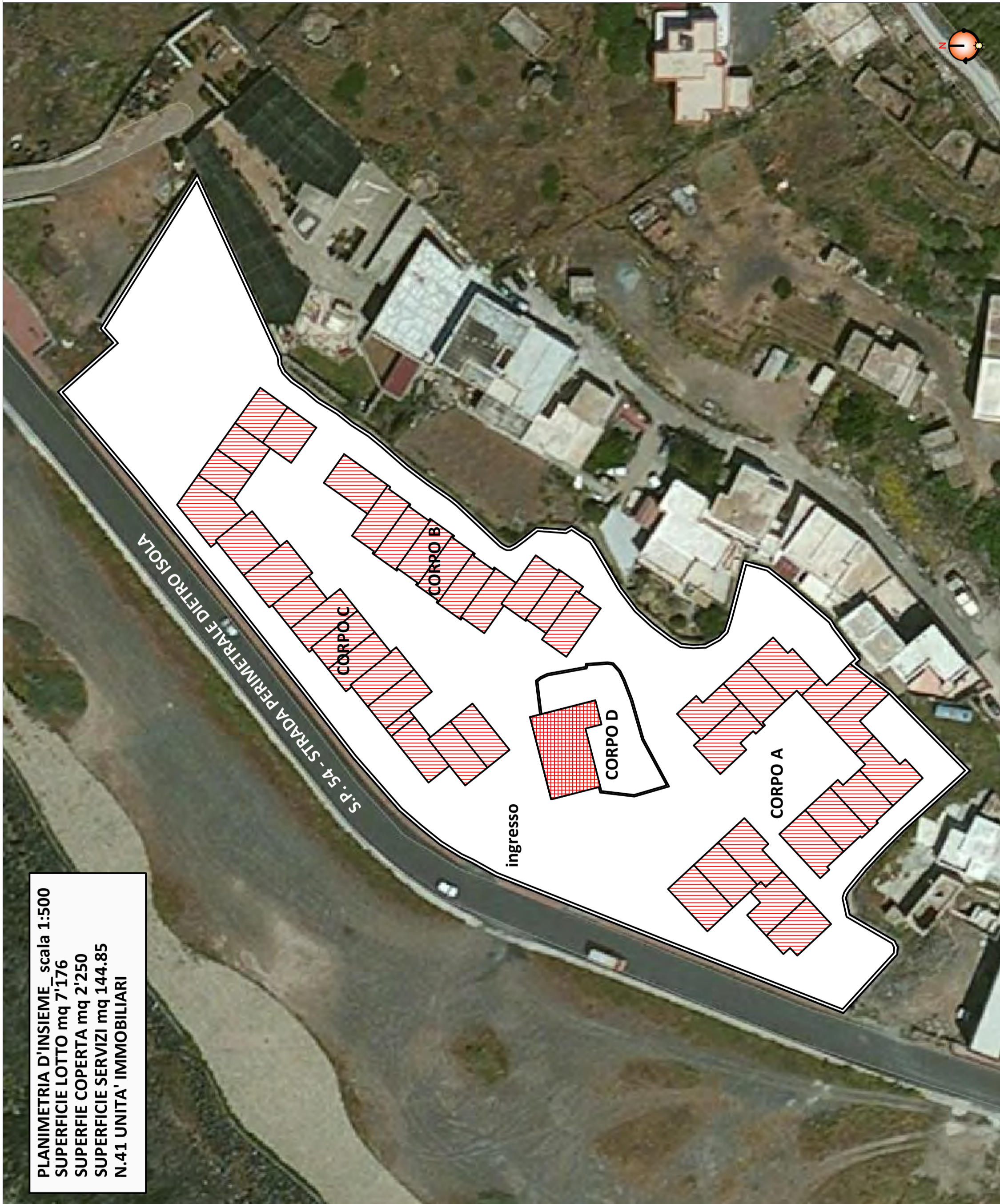


PLANIMETRIA D'INSIEME - scala 1:500
SUPERFICIE LOTTO mq 7'176
SUPERFICIE COPERTA mq 2'250
SUPERFICIE SERVIZI mq 144.85
N.41 UNITA' IMMOBILIARI

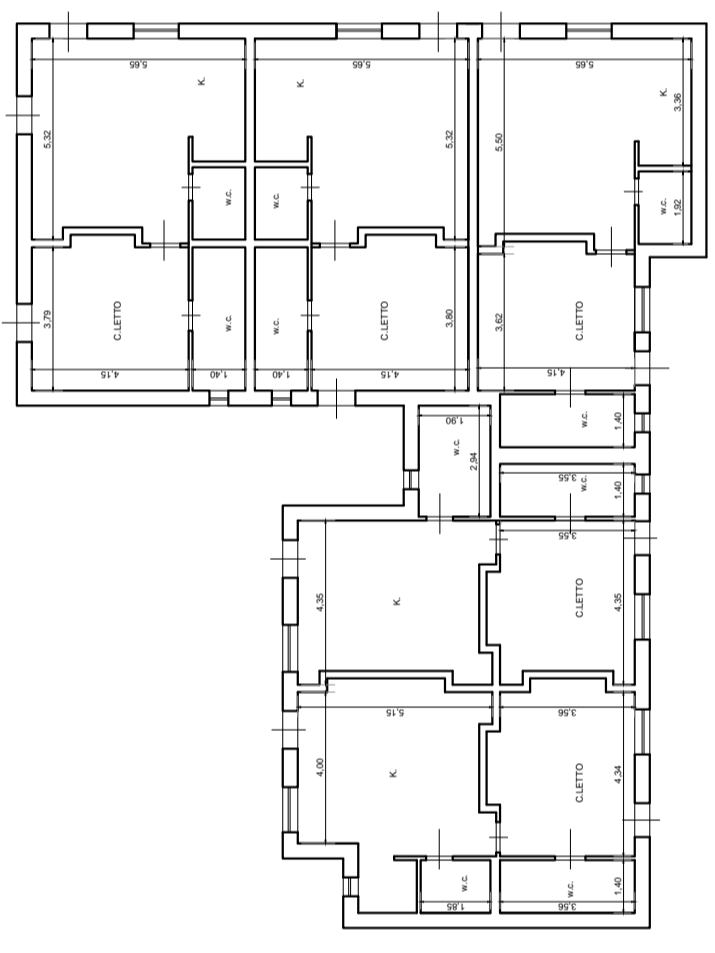
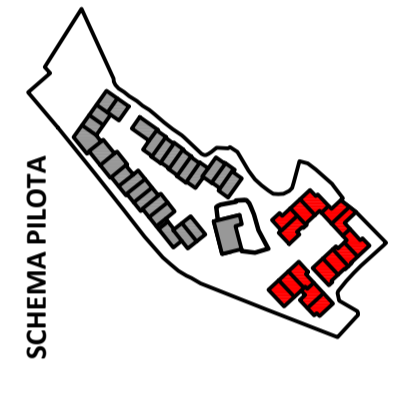


TRIBUNALE DI NAPOLI-SEZIONE FALLIMENTARE
 Fallimento n° 303/2015 - PERIZIA DI STIMA art. 173 c.p.c. e Legge 132/2015
 ALLEGATO - 04.5

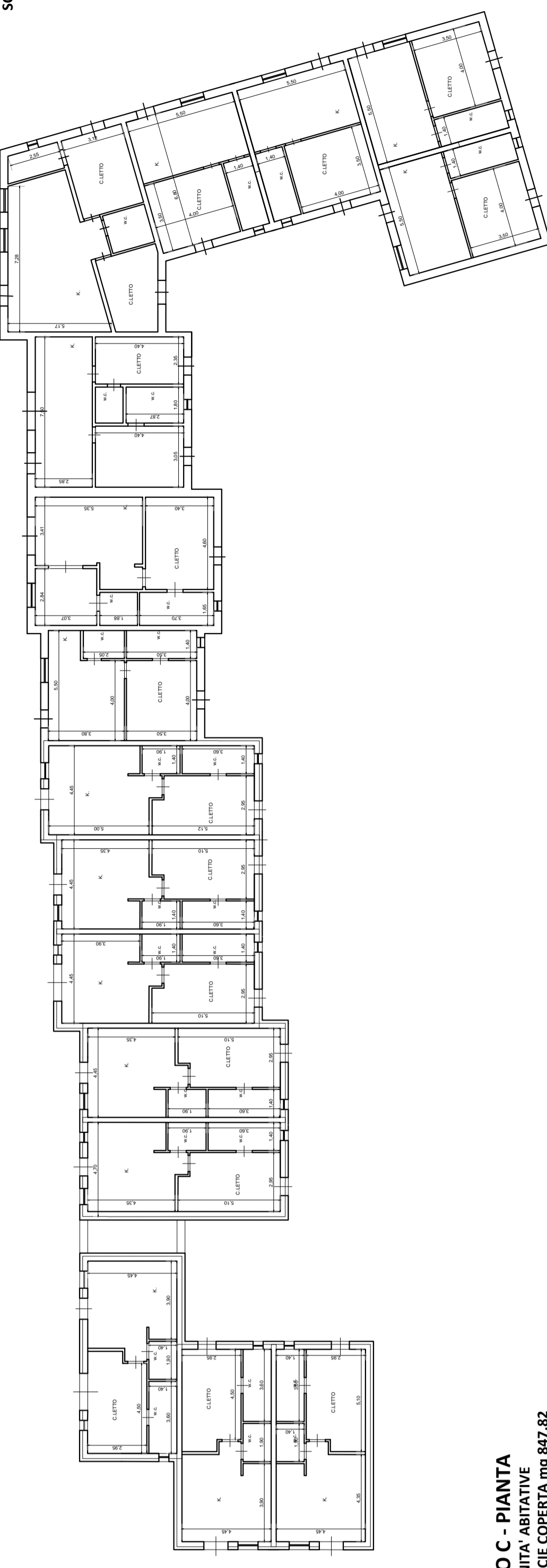
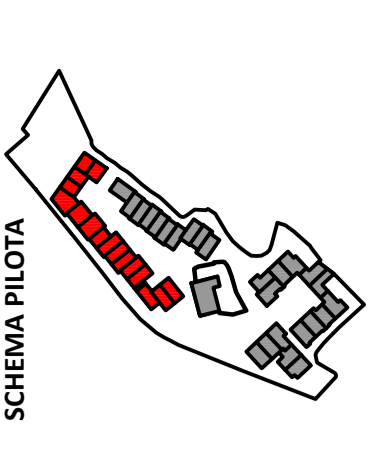
COMPLESSO IMMOBILIARE SITO IN PANTELLERIA (TP)
 ALLA VIA S.P. N.54 LOCALITA' PUNTA SAN LEONARDO

GRAFICI DI RILIEVO:
PIANTE - scala 1:200

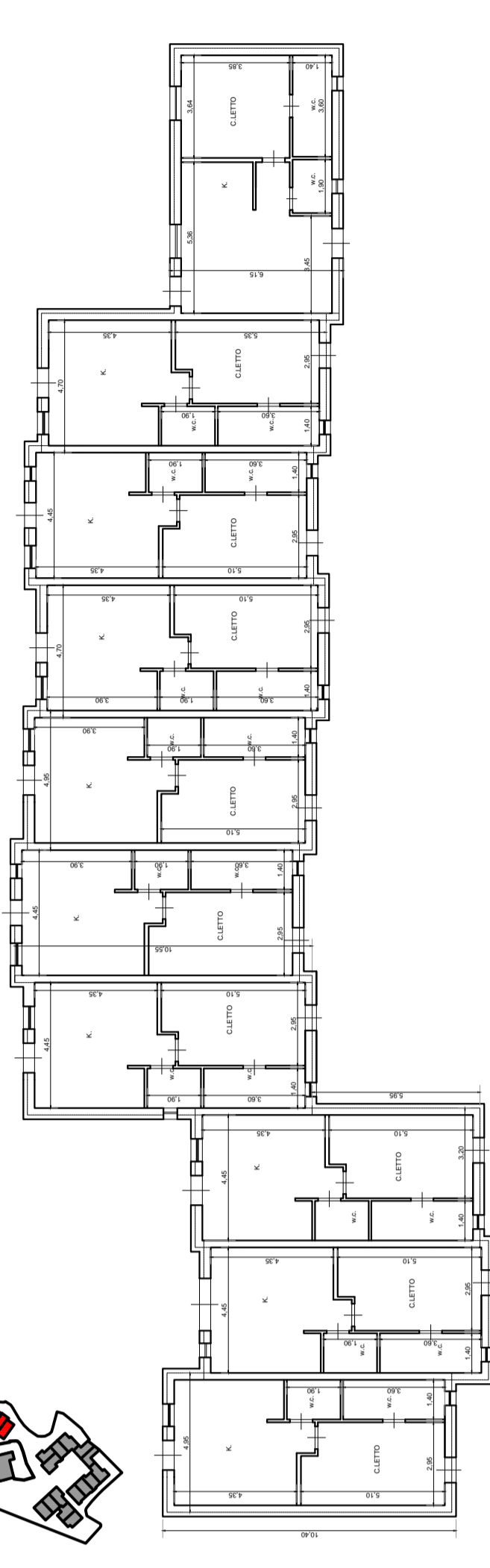
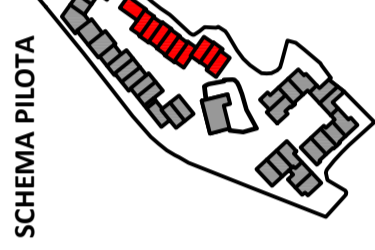
L'ESPERTO:
ARCH. FILVIO ERICHELLO



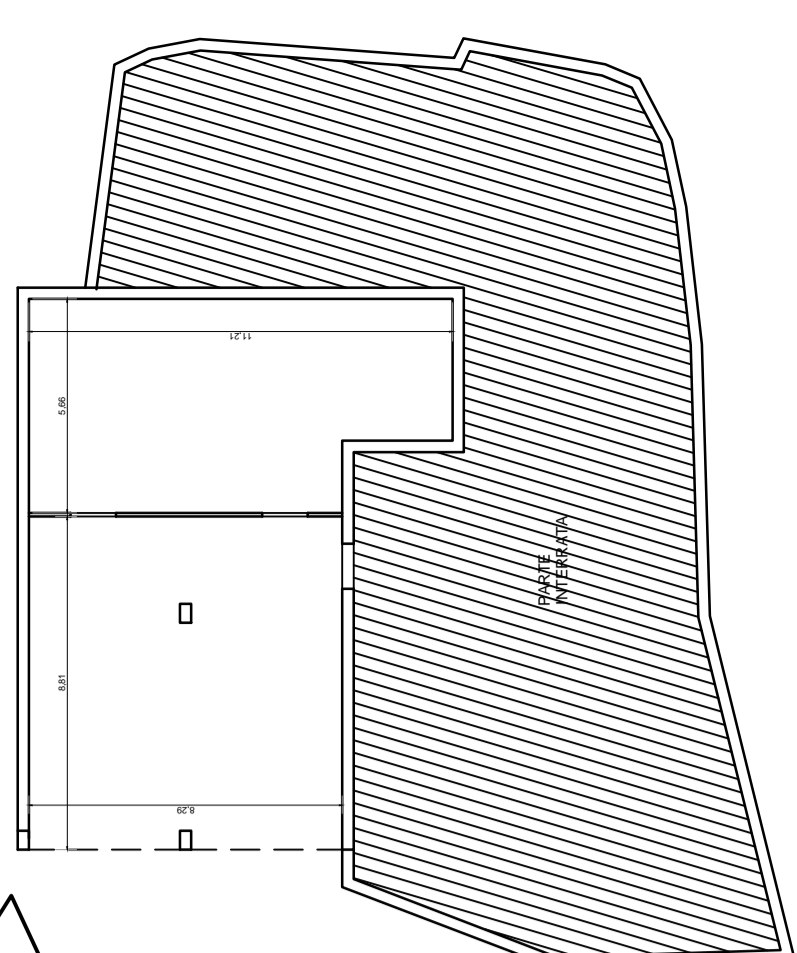
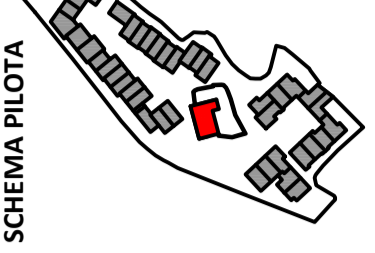
CORPO C - PIANTA
 N. 16 UNITA' ABITATIVE
 SUPERFICIE COPERTA mq 847.82



CORPO B - PIANTA
 N. 10 UNITA' ABITATIVE
 SUPERFICIE COPERTA mq 509.00



CORPO A - PIANTA
 N. 15 UNITA' ABITATIVE
 SUPERFICIE COPERTA mq 891.65



CORPO D - PIANTA
 CENTRO SERVIZI
 SUPERFICIE COPERTA mq 144.85